

Lift Data

Student Activity



Your Passion. Our Technology. Student Success.™

7 8 **9** 10 10A 11 12



TI-Nspire CAS



Investigation



Student



90min

Aim

To explore data generated from the altitude of lifts in high rise buildings over a period of time. Students will use authentic data to graph and analyse the altitude of a lift over a period of time in order to determine travel time, speed and the number of floors visited.

Equipment

For this activity you will need:

- TI-Nspire CAS
- TI-Nspire CAS file: Lift Data

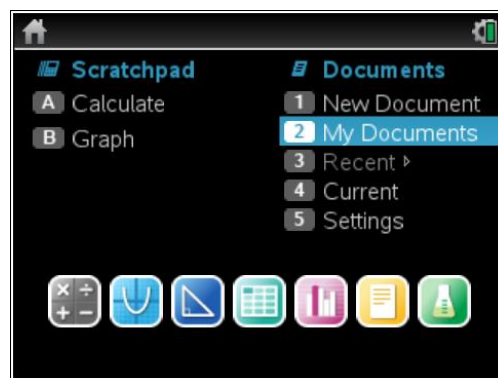
Problem Description

The altitude of a lift graphed over time provides useful information about the direction of travel, speed, idle time and usage. The altitude data was obtained using the altimeter in a wireless dynamic sensor. The three data sets were obtained from two different lifts. One lift is located in Chicago and the other is in the Gold Coast. Data is located in **Lists & Spreadsheet** under the following headings: **time1_mins, altitude1_m** for lift 1, **time2_mins, altitude2_m** for lift 2 & **time3_mins, altitude3_m** for lift 3. Students will use **Data & Statistics** to graph the lift data; then they will determine if the relationship is linear or non-linear, calculate the upward and downward speed of a lift, and finally identify which data sets belong to the same lift.

Technology

This activity requires access to the “Lift Data” TI-Nspire document. This document should be loaded on your device before proceeding.

Once the document is on your handheld, press **home** and select **My Documents**. Locate the “Lift Data” document and press **enter** to open.



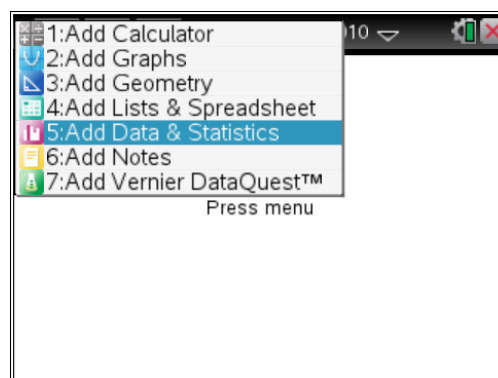
Navigate to page **1.2** (shown opposite). Use the arrow keys to scroll across to view the column headings or down to view the data.

	A time1_mins	B altitude1_m	C time2_mins
1	0	0	0
2	0.01	-0.272355	0.01
3	0.02	0	0.02
4	0.03	-0.544709	0.03
5	0.04	-0.817064	0.04

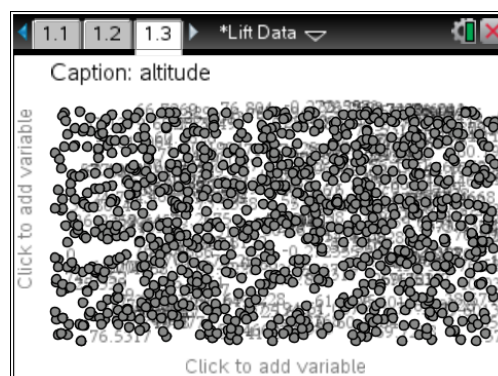
Graphing the data for lift 1

Step 1

Press **home** or **ctrl + I** and select **Add Data & Statistics** to insert a new page.

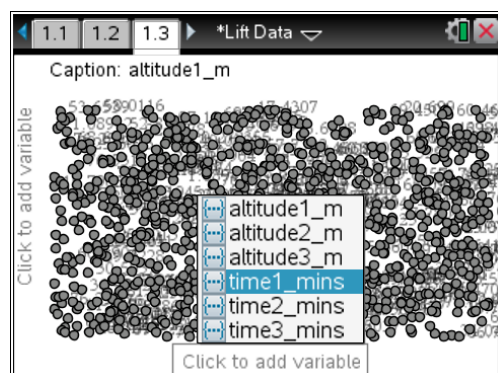


All of the points should appear on the screen.

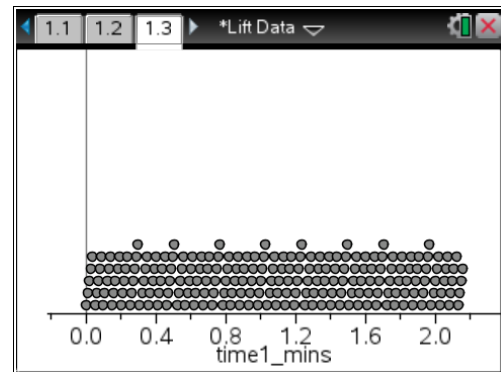


Step 2

Press **tab** or use the **mouse** to highlight a list of variables for the horizontal axis. Select **time1_mins**.

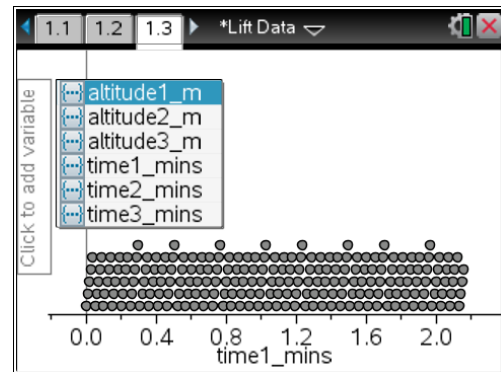


A dot plot of the data will appear.



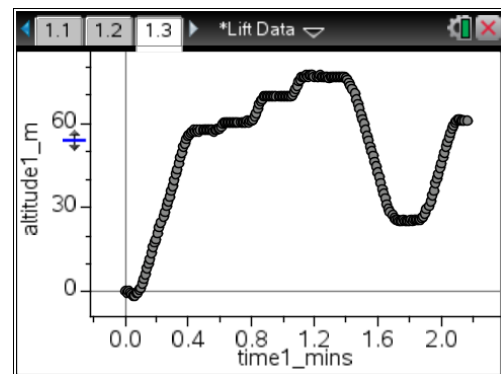
Step 3

Press **tab** or use the **mouse** to highlight a list of variables for the vertical axis. Select **altitude1_m**.



A scatter plot of the data will appear.

The altitude is in metres and the time is in minutes.



Questions

1. What is the approximate maximum altitude reached by the lift?

2. What is the approximate total travel time for the lift?

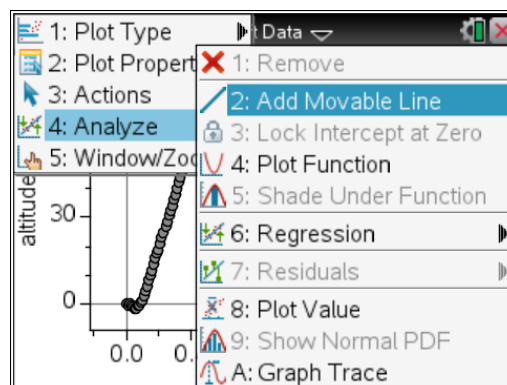
3. How many floors did the lift visit? Don't include the starting floor?

Estimating the speed of a lift by using a moveable line

The motion of the elevator between floors (when presented as a graph) is represented by a series of straight lines. Long straight lines represent trips between floors that are well separated, whereas a short straight line could represent a trip between two adjacent floors. These straight lines are referred to as “linear” and the slope of these lines represents the speed of a lift which should be constant between floors.

Step 1

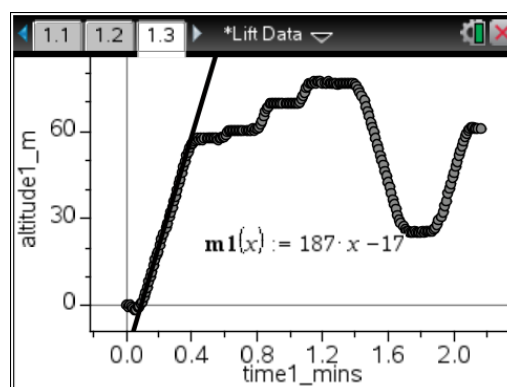
Press **menu > Analyse > Add Moveable Line**.



Step 2

Adjust the position of the moveable line by using the arrows until it matches the first linear section of the lift data. An equation will appear on screen. In this example, the equation is $m1(x) = 187x - 17$ so the speed of the lift is 187 metres/minute. This is approximately 3 metres/second.

$$[\text{Speed} = \frac{\text{distance}}{\text{time}} = \frac{187}{60} = 3.12 \text{ metres/sec}]$$



Note: There will be some variation between results based on the placement of the moveable line. Greater accuracy is obtained when the computer view is used (rather than the calculator view).

Determining the lift speed from a table of values

The lift speed can also be determined by finding the gradient from a table of values on page 1.2.

$$\text{Gradient (m)} = \frac{\text{rise}}{\text{run}} = \frac{y_2 - y_1}{x_2 - x_1}$$

Using the highlighted data;

$$\text{Gradient (m)} = \frac{20.699 - 18.7925}{0.21 - 0.2} = \frac{1.9065}{0.01} = 190.65 \text{ metres/min}$$

This speed agrees quite closely with the previous result of 187 metres/minute.

The screenshot shows a table with the following data:

	A time1_mins	B altitude1_m	C time2_mins
20	0.19	17.4307	0.19
21	0.2	18.7925	0.2
22	0.21	20.699	0.21
23	0.22	22.8778	0.22
24	0.23	24.7843	0.23

The table is displayed in a software interface with a grid. The row for time 0.21 is highlighted. The status bar at the bottom shows 'A21:B22 0.2'.

Note: There is some variation using adjacent pairs of data points separated by 0.01 minutes. A more accurate result would be obtained over a greater period of time.

Questions (continued)

4. Determine the approximate downward speed for lift 1 by using the moveable line.

5. Determine the approximate downward speed for lift 1 by determining the gradient from a table of values. Compare this with the speed obtained in question 4.

6. Graph **altitude2_m v's time2_mins** for lift 2. What is the total travel time for the lift and how many floors does the lift visit including the starting and finishing floors?

7. Determine the downward and upward speeds for the lift by using a moveable line and by finding the gradient from a table of values.

8. Graph **altitude3_m v's time3_mins** for lift 3. What is the total travel time for the lift and how many floors does the lift visit including the starting and finishing floors?

9. Determine the downward and upward speeds for the lift by using a moveable line and a table of values.

10. Two of the three data sets represent the same lift. Which two data sets represent the same lift?